



MICHELIN

Date : February 10 1997

Ref. AA110081

CARACTERISTIQUES TECHNIQUES
TECHNICAL CHARACTERISTICS

365/80 R 20 XZL TL 152 K MPT

PLE/T - PLE/M - Département Poids Lourd - *Truck Tire Department*

PROPRIETE MICHELIN - MICHELIN PROPERTY
Reproduction ou communication interdites sans accord préalable
Reproduction or communication prohibited without prior approval

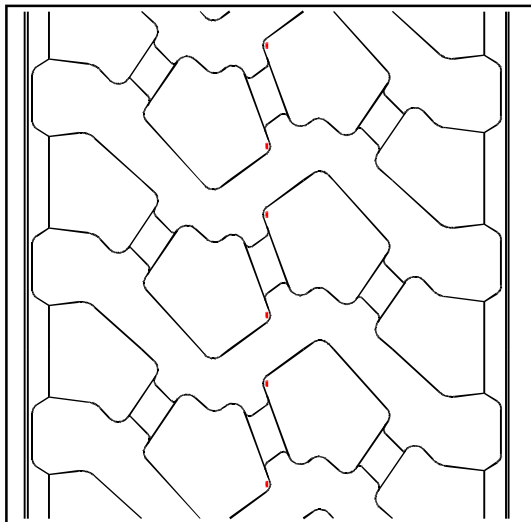


MICHELIN

Date : February 10 1997

Ref. SA110081

365/80 R 20 XZL TL 152 K MPT



| | | | |
|-----------------------------|-----|------|------|
| Charge en simple | 152 | 3550 | kg |
| Charge en jumelé | | | kg |
| Vitesse | K | 110 | km/h |
| Pression (en simple) | | 6.0 | bar |
| Pression (en jumelé) | | | bar |

Point singulier :

| | | | |
|------------------------------------|--|--|------|
| Charge en simple | | | kg |
| Charge en jumelé | | | kg |
| Vitesse | | | km/h |
| Pression (simple et jumelé) | | | bar |

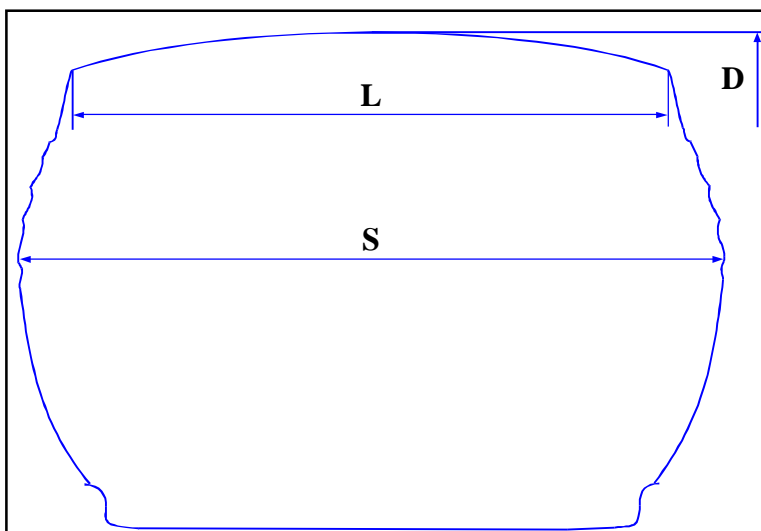
UTILISATION : Segment L

POSITION : Toutes positions

CARACTERISTIQUES TECHNIQUES

| | | | | | |
|------------------------------------|-------|----|---------------------------|------|----|
| Poids | 70.1 | kg | Section libre (S) | 372 | mm |
| Capacité interne | 186.0 | l | Section écrasée * | 410 | mm |
| Largeur sommet (L) | 313 | mm | Diamètre libre (D) | 1096 | mm |
| Profondeur de sculpture | 19.9 | mm | Rayon écrasé * | 501 | mm |
| Profondeur de recreusage | 4.0 | mm | Flèche* | 46.5 | mm |
| Circonférence de roulement* | 3330 | mm | | | |

* aux conditions nominales



JANTE : 11-20

CHAMBRE:

FLAP:

Jante : 11DC (montage TL avec joint Jt 1443)

Jante : 11SDC (montage TT)

| | | |
|--------------|----------------|-------------|
| Jante | Chambre | Flap |
| 11SDC | 20Q | 320-20L |

PROPRIETE MICHELIN - MICHELIN PROPERTY

Reproduction ou communication interdites sans accord préalable
Reproduction or communication prohibited without prior approval

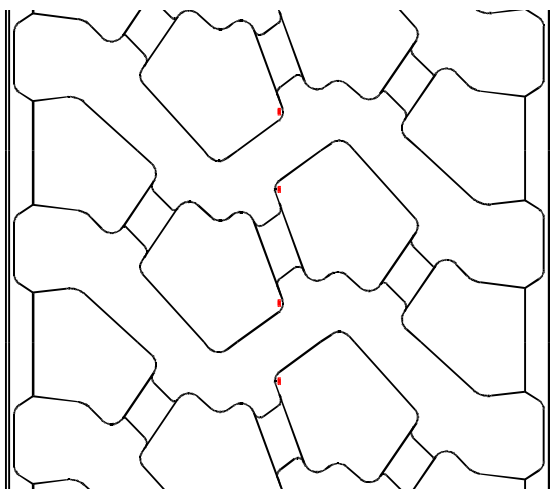


MICHELIN

Date : February 10 1997

Ref. RJ 110081

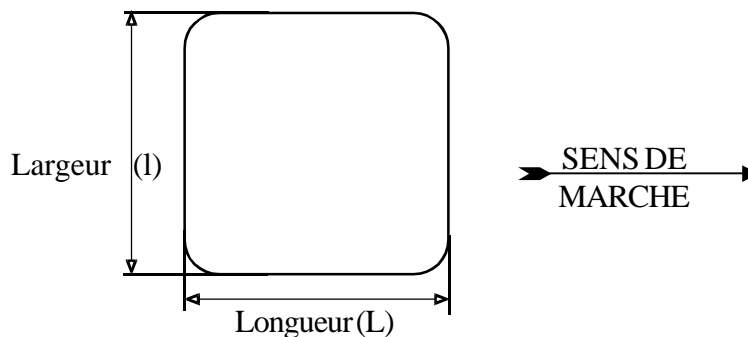
365/80 R 20 XZL TL 152 K MPT



Profondeur de sculpture - 19.9 mm

| SURFACE DE CONTACT | | | |
|--------------------|----------------------------|---------|---------|
| | Surface Cm ² | L mm | l mm |
| Totale * | 777 | 292 | 308 |
| Réelle * | 395 | 292 | 308 |

* aux conditions nominales route



PROPRIETE MICHELIN - MICHELIN PROPERTY
Reproduction ou communication interdites sans accord préalable
Reproduction or communication prohibited without prior approval



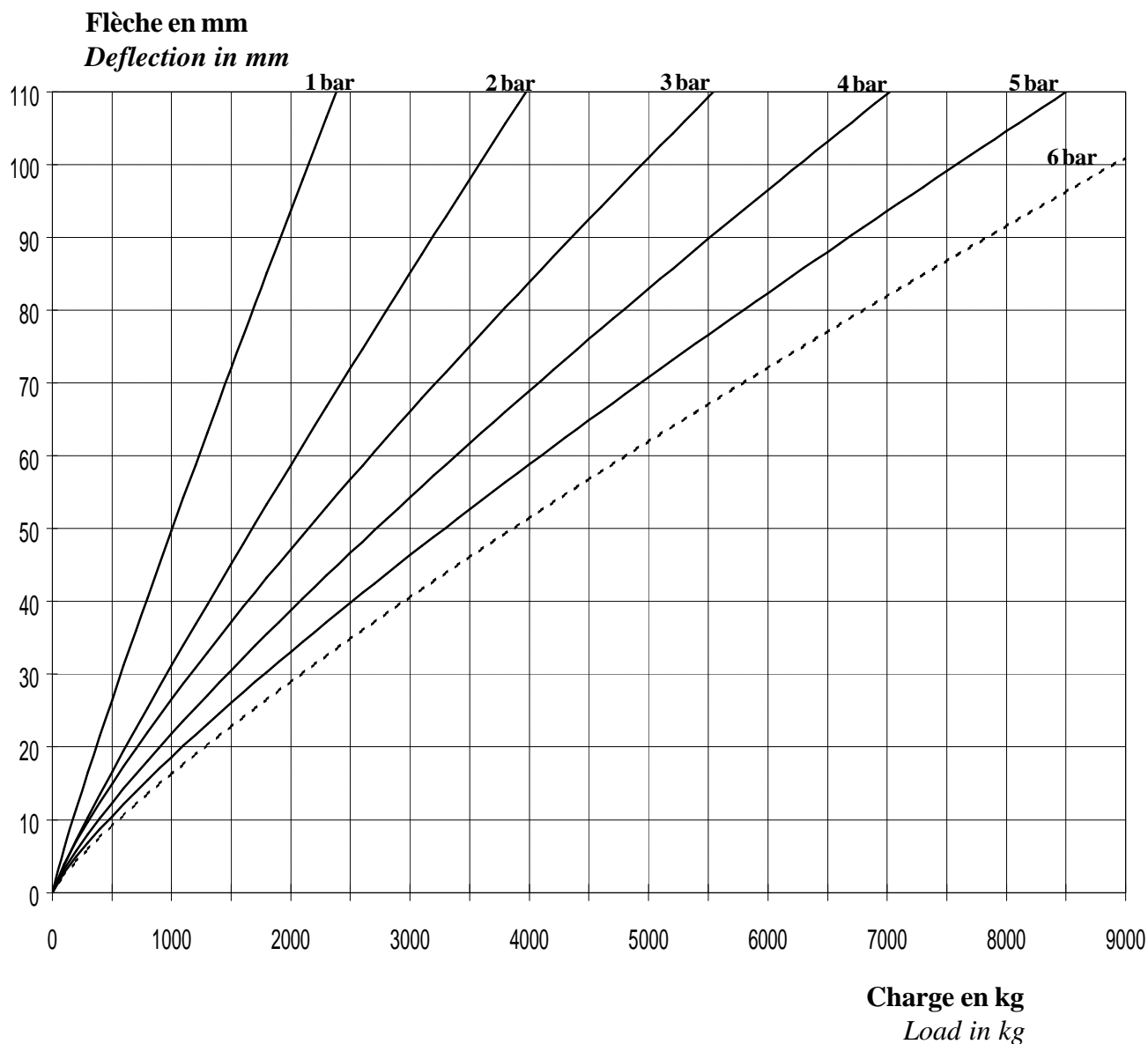
MICHELIN

Date : February 10 1997

Ref. AC110081

RIGIDITE RADIALE - RADIAL DEFLECTION VERSUS RADIAL FORCE *

365/80 R 20 XZL TL 152 K MPT



Jante de mesure-Measuring rim 11 - 20

*AUX CONDITIONS D'ESSAI MICHELIN - UNDER MICHELIN TEST CONDITIONS

PROPRIETE MICHELIN - MICHELIN PROPERTY
Reproduction ou communication interdites sans accord préalable
Reproduction or communication prohibited without prior approval



MICHELIN

Date : February 10 1997

Ref. BR110081

CARACTERISTIQUES TECHNIQUES-TECHNICAL CHARACTERISTICS

365/80 R 20 XZL TL 152 K MPT

| | |
|---|---------------|
| CAI | 110081 |
| Type | TUBELESS |
| Load range | L |
| Ply rating | |
| Indice de charge simple - Load index in single | 152 |
| Indice de charge en jumelé - Load index in dual | |
| Code de vitesse - Speed symbol | K |
| Point singulier - Unique point | |
| N° homologation - Homologation N° | E2 0093792 |
| Jante de mesure - Measuring rim | 11 - 20 |
| Jante(s) permise(s) - Permitted rim(s) | |
| Chambre - Tube | 20Q |
| Joint - Seal | Jt TYRAN 1443 |
| Flap - Flap | 320-20L |

CONDITIONS NOMINALES - NOMINAL CONDITIONS :

| | Charge Kg | Vitesse Km/h | Pression bar |
|---|--------------|-----------------|-----------------|
| Utilisation route - Road use | 3550 | 110 | 6.0 |
| Utilisation piste - Track use | 3550 | 65 | 4.7 |
| Utilisation sable/boue - Sand/mud use | 3550 | 20 | 2.4 |
| Utilisation en jumelé - Dual fitment use | | | |
| Point singulier (en simple) - Unique point (single) | | | |
| Point singulier (en jumelé) - Unique point (dual) | | | |

CARACTERISTIQUES PRINCIPALES - PRINCIPAL CHARACTERISTICS :

| | |
|---|------------------------|
| Diamètre - Diameter | 1096 mm |
| Rayon libre - Free radius | 548 mm |
| Rayon écrasé - Static laden radius* | 501 mm |
| Section libre - Free section width | 372 mm |
| Section écrasée - Laden section width* | 410 mm |
| Révolutions/mile - Revolutions/mile* | 483 |
| Circonférence de roulement - Rolling circumference* | 3330 mm |
| Largeur sommet - Tread width | 313 mm |
| Flèche sommet - Tread droop | 22.5 mm |
| Profondeur sculpture - Tread depth | 19.9 mm |
| Profondeur de recreusage - Regroovable depth | 4.0 mm |
| Poids nominal - Nominal tire weight | 70.1 kg |
| Volume intérieur - Internal volume | 186 l |
| Moment d'inertie - Mass moment of inertia | 14.4 Kg.m ² |
| Épaisseur bourrelet - Bead thickness | 28.0 mm |

EMPREINTE AU SOL - GROUND CONTACT AREA*

| | | | |
|-------------------|--------|-----------------------------|---------------------|
| Longueur - Length | 292 mm | Surface totale - Total area | 777 cm ² |
| Largeur - Width | 308 mm | Surface réelle - Net area | 395 cm ² |

*AUX CONDITIONS NOMINALES ROUTE - FOR NOMINAL ROAD CONDITIONS

PROPRIETE MICHELIN - MICHELIN PROPERTY

Reproduction ou communication interdites sans accord préalable
Reproduction or communication prohibited without prior approval



MICHELIN

Date : February 10 1997

Ref. AB110081

365/80 R 20 XZL TL 152 K MPT

Charges et pressions d'utilisation **en monte simple**
Loads and inflation pressures chart in single fitment

Pressions d'utilisation route - *Tire inflation pressures for road service* (bar)

| Charge par enveloppe <i>Load per tire</i> (Kg) | | Vitesse - <i>Speed</i> (Km/h) | | | | | | | | | | | | |
|--|--------------------------------|-------------------------------|------|------|------|------|------|------|------|------|------|------|------|-----|
| | | 130 | 120 | 110 | 100 | 90 | 80 | 65 | 50 | 40 | 30 | 20 | 10 | 0 |
| Exceptionnel route | 8880 | | | | | | | | | | | | | 8.4 |
| | 6390 | | | | | | | | | | | | 7.8 | 5.8 |
| | 5330 | | | | | | | | | | | 7.3 | 6.4 | 4.7 |
| | 4440 | | | | | | | | | | 6.8 | 5.9 | 5.2 | 3.8 |
| | 4080 | | | | | | | | | 6.6 | 6.2 | 5.4 | 4.7 | 3.5 |
| | 3980 | | | | | | | | 6.6 | 6.4 | 6.0 | 5.2 | 4.6 | 3.4 |
| Special road conditions | 3850 | | | | | | 6.4 | 6.3 | 6.2 | 5.8 | 5.0 | 4.4 | 3.2 | |
| | 3690 | | | | | 6.2 | 6.1 | 6.0 | 5.9 | 5.5 | 4.8 | 4.2 | 3.1 | |
| | 3620 | | | | 6.1 | 6.0 | 6.0 | 5.9 | 5.8 | 5.4 | 4.7 | 4.1 | 3.0 | |
| | 3550 | | 6.0 | 6.0 | 5.9 | 5.9 | 5.9 | 5.8 | 5.6 | 5.2 | 4.6 | 4.0 | 2.9 | |
| | 3500 | | 5.9 | 5.9 | 5.8 | 5.8 | 5.8 | 5.7 | 5.6 | 5.2 | 4.5 | 3.9 | 2.9 | |
| Nominal route | 3400 | | 5.7 | 5.7 | 5.6 | 5.6 | 5.6 | 5.5 | 5.4 | 5.0 | 4.4 | 3.8 | 2.8 | |
| | 3300 | | 5.5 | 5.5 | 5.5 | 5.4 | 5.4 | 5.3 | 5.2 | 4.8 | 4.2 | 3.7 | 2.7 | |
| | 3200 | | 5.3 | 5.3 | 5.3 | 5.2 | 5.2 | 5.1 | 5.0 | 4.7 | 4.1 | 3.5 | 2.5 | |
| | 3100 | | 5.1 | 5.1 | 5.1 | 5.1 | 5.0 | 4.9 | 4.8 | 4.5 | 3.9 | 3.4 | 2.4 | |
| | 3000 | | 5.0 | 5.0 | 4.9 | 4.9 | 4.8 | 4.8 | 4.7 | 4.3 | 3.8 | 3.3 | 2.3 | |
| | 2900 | | 4.8 | 4.8 | 4.7 | 4.7 | 4.6 | 4.6 | 4.5 | 4.2 | 3.6 | 3.1 | 2.2 | |
| | 2800 | | 4.6 | 4.6 | 4.5 | 4.5 | 4.5 | 4.4 | 4.3 | 4.0 | 3.5 | 3.0 | 2.1 | |
| | 2700 | | 4.4 | 4.4 | 4.3 | 4.3 | 4.3 | 4.2 | 4.1 | 3.8 | 3.3 | 2.9 | 2.0 | |
| | Nominal road conditions | 2600 | | 4.2 | 4.2 | 4.1 | 4.1 | 4.1 | 4.0 | 3.9 | 3.7 | 3.2 | 2.7 | 1.9 |
| | | 2500 | | 4.0 | 4.0 | 4.0 | 3.9 | 3.9 | 3.8 | 3.8 | 3.5 | 3.0 | 2.6 | 1.8 |
| | | 2400 | | 3.8 | 3.8 | 3.8 | 3.7 | 3.7 | 3.7 | 3.6 | 3.3 | 2.9 | 2.5 | 1.7 |
| | | 2300 | | 3.6 | 3.6 | 3.6 | 3.6 | 3.5 | 3.5 | 3.4 | 3.2 | 2.7 | 2.3 | 1.6 |
| | | 2200 | | 3.4 | 3.4 | 3.4 | 3.4 | 3.3 | 3.3 | 3.2 | 3.0 | 2.6 | 2.2 | 1.5 |
| | | 2100 | | 3.2 | 3.2 | 3.2 | 3.2 | 3.2 | 3.1 | 3.0 | 2.8 | 2.4 | 2.1 | 1.4 |
| | | 2000 | | 3.1 | 3.1 | 3.0 | 3.0 | 3.0 | 2.9 | 2.9 | 2.6 | 2.3 | 1.8 | 1.3 |
| | | 1900 | | 2.9 | 2.9 | 2.8 | 2.8 | 2.8 | 2.7 | 2.7 | 2.5 | 2.1 | 1.7 | 1.3 |
| | | 1800 | | 2.7 | 2.7 | 2.6 | 2.6 | 2.6 | 2.6 | 2.5 | 2.3 | 1.8 | 1.6 | 1.2 |
| | | 1700 | | 2.5 | 2.5 | 2.4 | 2.4 | 2.4 | 2.4 | 2.3 | 2.1 | 1.7 | 1.5 | 1.1 |
| | 1600 | | 2.3 | 2.3 | 2.3 | 2.2 | 2.2 | 2.2 | 2.1 | 1.8 | 1.6 | 1.4 | 1.0 | |
| | 1500 | | 2.1 | 2.1 | 2.1 | 2.1 | 2.0 | 2.0 | 1.8 | 1.7 | 1.4 | 1.3 | 0.9 | |
| 1400 | | 1.8 | 1.8 | 1.7 | 1.7 | 1.7 | 1.7 | 1.6 | 1.5 | 1.3 | 1.1 | 0.8 | | |
| Flèche <i>Deflection</i> (mm) | | | 46.5 | 46.5 | 47 | 47 | 47.5 | 48 | 49 | 51.5 | 56.5 | 62.5 | 77.5 | |
| Surface totale empreinte <i>Total contact area</i> (cm ²) | | | 777 | 777 | 782 | 783 | 787 | 793 | 801 | 830 | 891 | 956 | 1128 | |
| Section écrasée <i>Laden section width</i> (mm) | | | 410 | 410 | 411 | 411 | 411 | 412 | 412 | 414 | 419 | 423 | 436 | |
| Rayon écrasé <i>Laden radius</i> (mm) | | | 501 | 501 | 501 | 501 | 501 | 500 | 499 | 497 | 491 | 486 | 470 | |
| Circonférence de roulement <i>Rolling circumference</i> (mm) | | | 3330 | 3330 | 3329 | 3329 | 3329 | 3328 | 3327 | 3325 | 3319 | 3314 | 3303 | |

Pressions arrondies au 1/10 de bar le plus proche - *Pressures are rounded to nearest 0.1 bar*

Conditions nominales voir fiche BR110081A - *For nominal conditions see sheet BR110081A*

PROPRIETE MICHELIN - MICHELIN PROPERTY

Reproduction ou communication interdites sans accord préalable
Reproduction or communication prohibited without prior approval



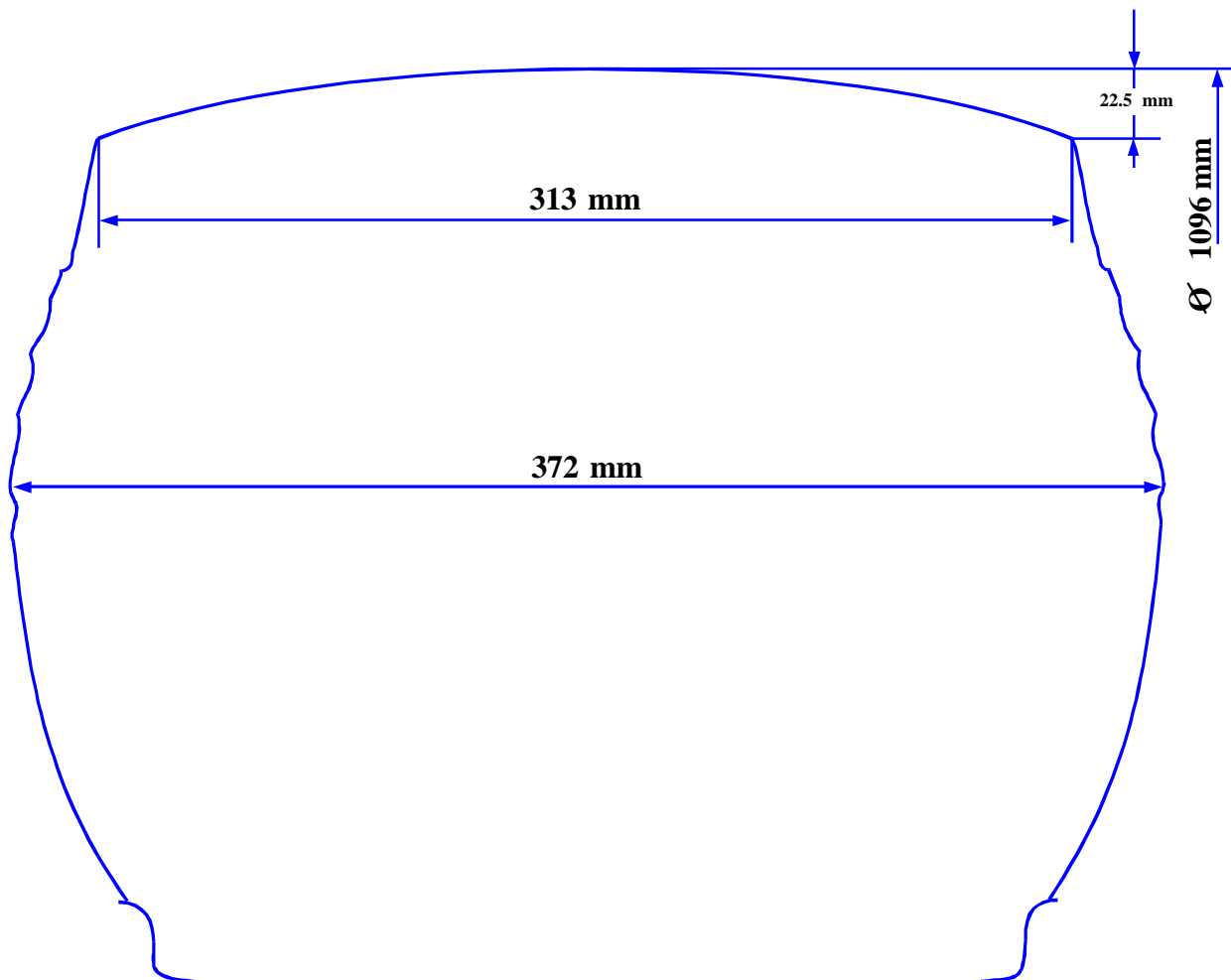
MICHELIN

Date : February 10 1997

Ref. AK110081

SCHEMA COTE DE LA SECTION TRANSVERSALE*
DIMENSIONED TIRE SECTION SKETCH*

365/80 R 20 XZL TL 152 K MPT



JANTE DE MESURE - MEASURING RIM 11-20

PRESSION DE GONFLAGE - INFLATION PRESSURE 6.0 bar

* Pas à l'échelle - Not to scale

PROPRIETE MICHELIN - MICHELIN PROPERTY

Reproduction ou communication interdites sans accord préalable
Reproduction or communication prohibited without prior approval



MICHELIN

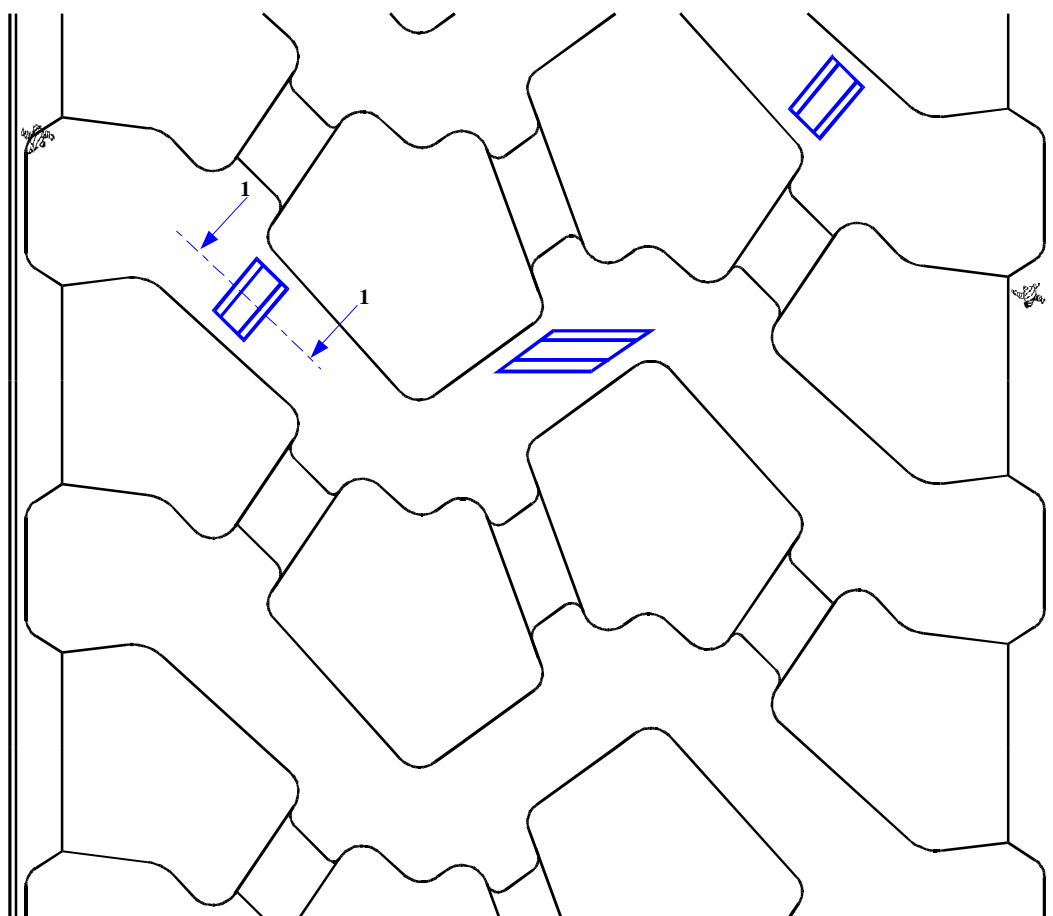
Date : February 10 1997

Ref. AJ 110081

DESSIN DE LA BANDE DE ROULEMENT - *TREAD DESIGN*

365/80 R 20 XZL TL 152 K MPT

Profondeur de sculpture - *Tread depth* 19.9 mm



SECTION 1 - 1



Profondeur de recreusage - *Depth of regrooving* 4.0 mm

PROPRIETE MICHELIN - MICHELIN PROPERTY

**Reproduction ou communication interdites sans accord préalable
*Reproduction or communication prohibited without prior approval***



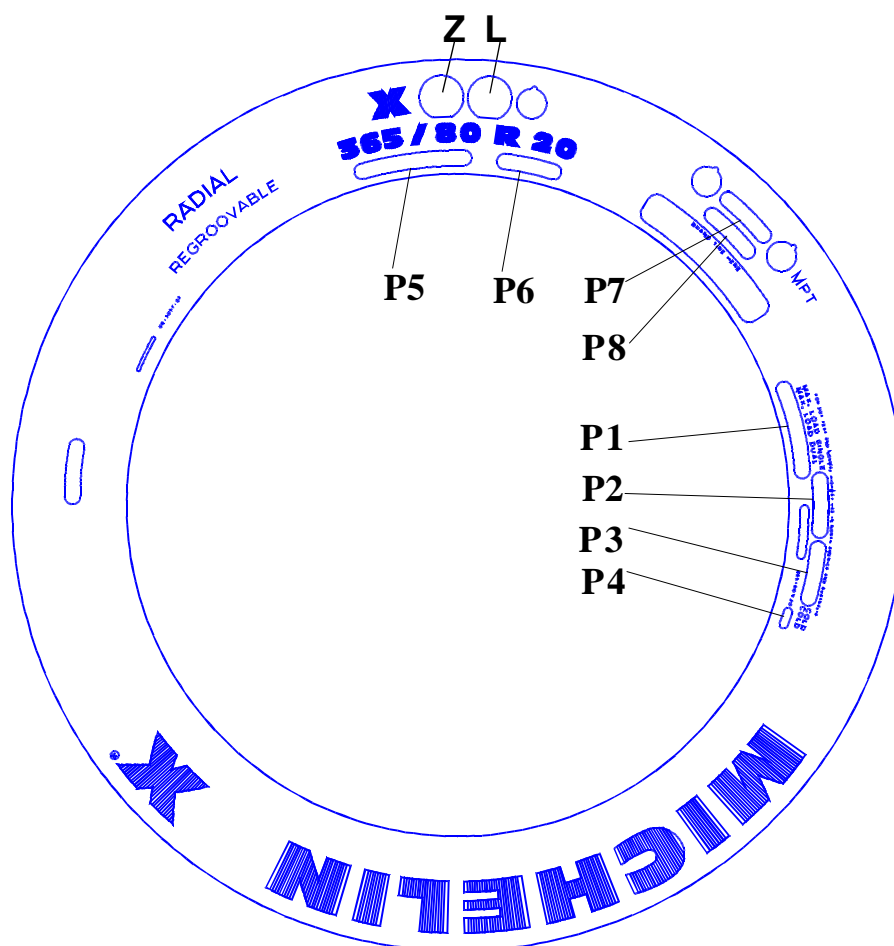
MICHELIN

Date : February 10 1997

Ref. AW110081

PLAN DE MARQUAGE - SIDEWALL MARKING PLAN

365/80 R 20 XZL TL 152 K MPT



FLANC A - SIDEWALL A

| P1 | P2 | P3 | P4 | P5 | P6 | P7 | P8 |
|---|----------|-----------|-----|------------|-------|----------|--------------------------|
| TREAD: 4 STEEL PLYES SIDEWALL: 1 STEEL PLY | 7830 LBS | AT 87 PSI | LRL | 14.5 R 20* | 152 K | TUBELESS | MAY BE USED WITH TUBE |

* LPC B uniquement

* LPC B only

PROPRIETE MICHELIN - MICHELIN PROPERTY

**Reproduction ou communication interdites sans accord préalable
Reproduction or communication prohibited without prior approval**



MICHELIN

Date : February 10 1997

Ref. AR110081

365/80 R 20 XZL TL 152 K MPT

Charges et pressions d'utilisation en monte simple
Loads and inflation pressures chart in single fitment

Utilisations spéciales - *Special conditions*

Pressions d'utilisation Piste, sable/boue - *Pressures when used on track, sand/mud (bar)*

| Charge par enveloppe <i>Load per tire</i> (Kg) | Vitesse - <i>Speed (Km/h)</i> | |
|--|--|------------------------------------|
| | Piste - <i>Track</i> 65 | Sable/boue - <i>Sand/mud</i> 20 |
| Conditions exceptionnelles <i>Special conditions</i> | 8880 | |
| | 6390 | |
| | 5330 | |
| | 4440 | |
| | 4080 | |
| | 3980 | |
| | 3850 | |
| | 3690 | |
| | 3620 | |
| | Conditions nominales <i>Nominal conditions</i> | 3550 |
| 3500 | | 4.6 |
| 3400 | | 4.5 |
| 3300 | | 4.3 |
| 3200 | | 4.2 |
| 3100 | | 4.0 |
| 3000 | | 3.9 |
| 2900 | | 3.7 |
| 2800 | | 3.5 |
| 2700 | | 3.4 |
| 2600 | | 3.2 |
| 2500 | | 3.1 |
| 2400 | | 2.9 |
| 2300 | | 2.8 |
| 2200 | | 2.6 |
| 2100 | | 2.5 |
| 2000 | | 2.3 |
| 1900 | | 2.2 |
| 1800 | | 1.9 |
| 1700 | | 1.8 |
| 1600 | 1.6 | |
| 1500 | 1.5 | |
| 1400 | 1.4 | |
| Flèche <i>Deflection (mm)</i> | 55.5 | 88 |
| Surface totale empreinte <i>Total contact area (cm²)</i> | 880 | 1244 |
| Section écrasée <i>Laden section width (mm)</i> | 418 | 444 |
| Rayon écrasé <i>Laden radius (mm)</i> | 493 | 460 |
| Circonférence de roulement <i>Rolling circumference (mm)</i> | 3320 | 3296 |

Pressions arrondies au 1/10 de bar le plus proche - *Pressures are rounded to nearest 0.1 bar*

Conditions nominales voir fiche BR110081A - *For nominal conditions see sheet BR110081A*

PROPRIETE MICHELIN - MICHELIN PROPERTY

Reproduction ou communication interdites sans accord préalable
Reproduction or communication prohibited without prior approval



MICHELIN

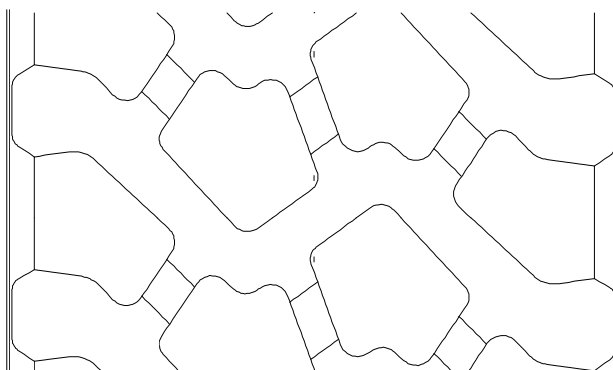
Date : February 10 1997

Ref. AX110081

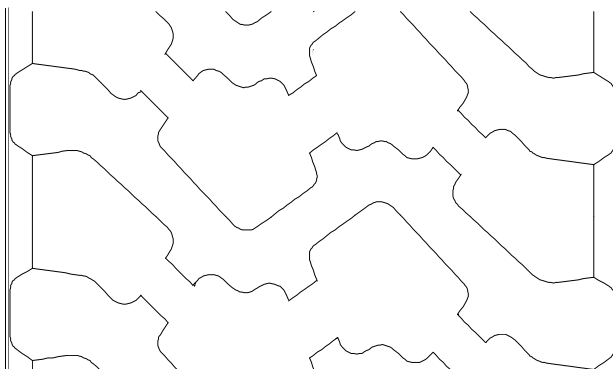
DESSIN DE RECREUSAGE - *REGROOVING DESIGN*

365/80 R 20 XZL TL 152 K MPT

NEUF - *NEW*



USE - *PARTWORN*

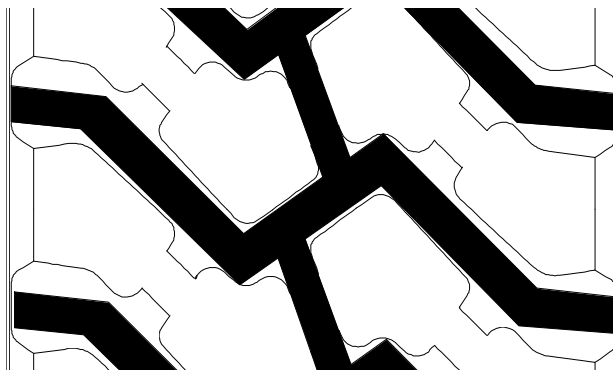


RECREUSE - *REGROOVED*

Profondeur de recreusage 4 mm
Regrooving depth

Lame R4
Blade

Largeur de recreusage 10 à 12 mm
Regrooving width



PROPRIETE MICHELIN - *MICHELIN PROPERTY*

**Reproduction ou communication interdites sans accord préalable
*Reproduction or communication prohibited without prior approval***



MICHELIN

Date : February 10 1997

Ref. 110081_2

365/80 R 20 XZL TL 152 K MPT



136524

PROPRIETE MICHELIN - MICHELIN PROPERTY
Reproduction ou communication interdites sans accord préalable
Reproduction or communication prohibited without prior approval